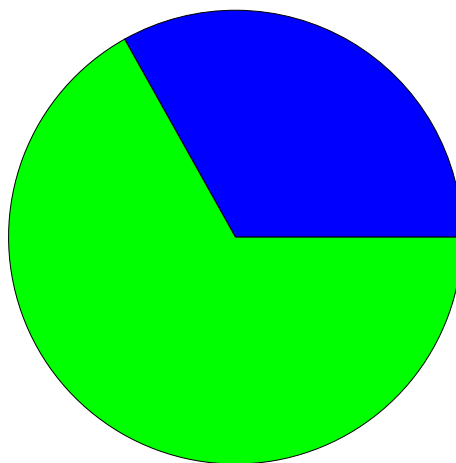


## สถิติจากแบบประเมินฯของครู

### สถิติ ชาย : หญิง

ชาย : 885 คน จาก 2672 คน คิดเป็น : 33.12 %

หญิง : 1787 คน จาก 2672 คน คิดเป็น : 66.88 %



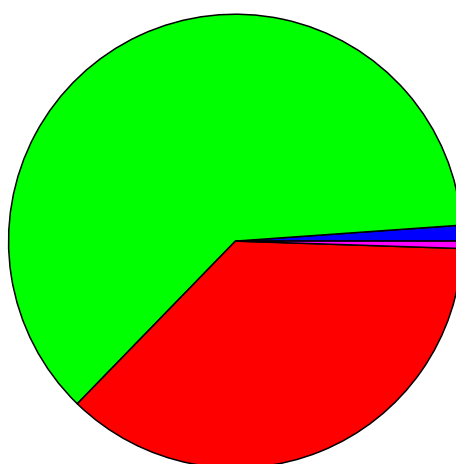
### สถิติการศึกษา

ต่ำกว่าปริญญาตรี : 30 คน จาก 2672 คน คิดเป็น : 1.12 %

ปริญญาตรี : 1646 คน จาก 2672 คน คิดเป็น : 61.6 %

ปริญญาโท : 982 คน จาก 2672 คน คิดเป็น : 36.75 %

ปริญญาเอก : 14 คน จาก 2672 คน คิดเป็น : 0.53 %



### สถิติวิชาที่สอน

วิทยาศาสตร์ : 1337 คน จาก 2672 คน คิดเป็น : 50.04 %

ฟิสิกส์ : 95 คน จาก 2672 คน คิดเป็น : 3.56 %

เคมี : 101 คน จาก 2672 คน คิดเป็น : 3.78 %

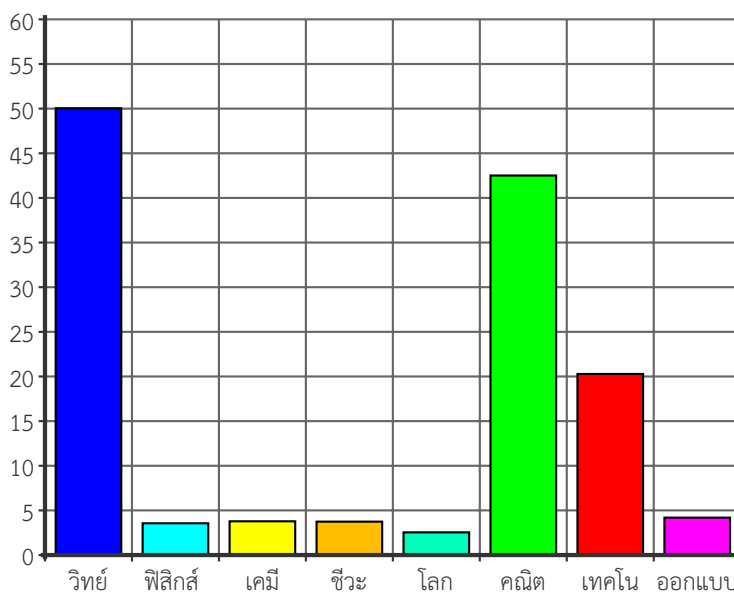
ชีวะ : 100 คน จาก 2672 คน คิดเป็น : 3.74 %

โลก ดาราศาสตร์ : 68 คน จาก 2672 คน คิดเป็น : 2.54 %

คณิตศาสตร์ : 1136 คน จาก 2672 คน คิดเป็น : 42.51 %

เทคโนโลยี : 542 คน จาก 2672 คน คิดเป็น : 20.28 %

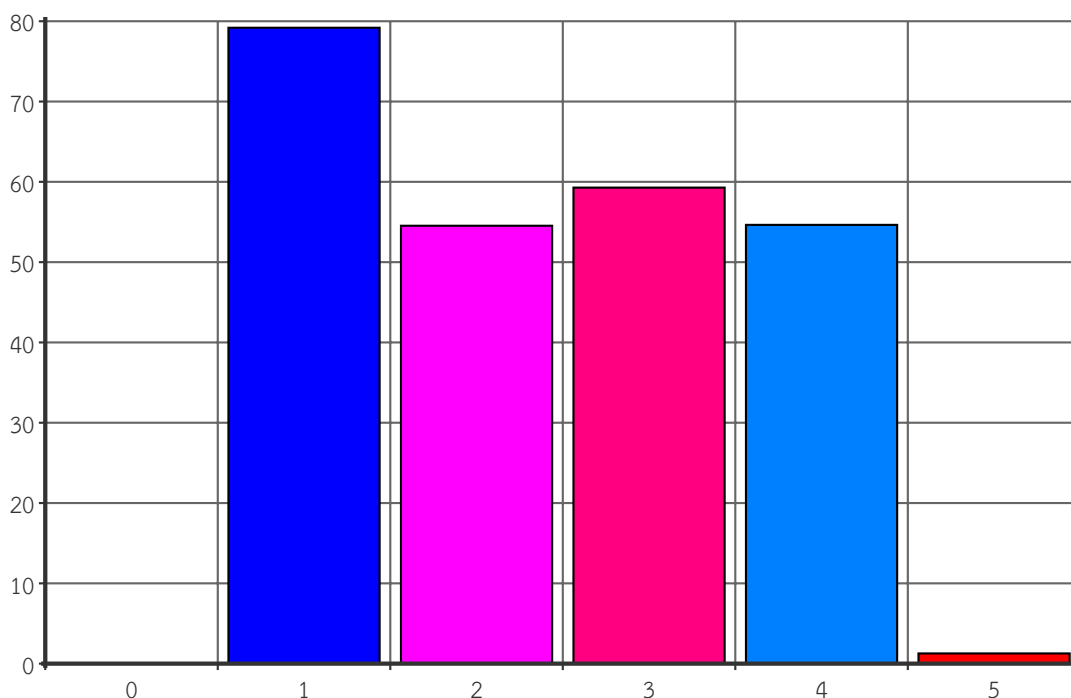
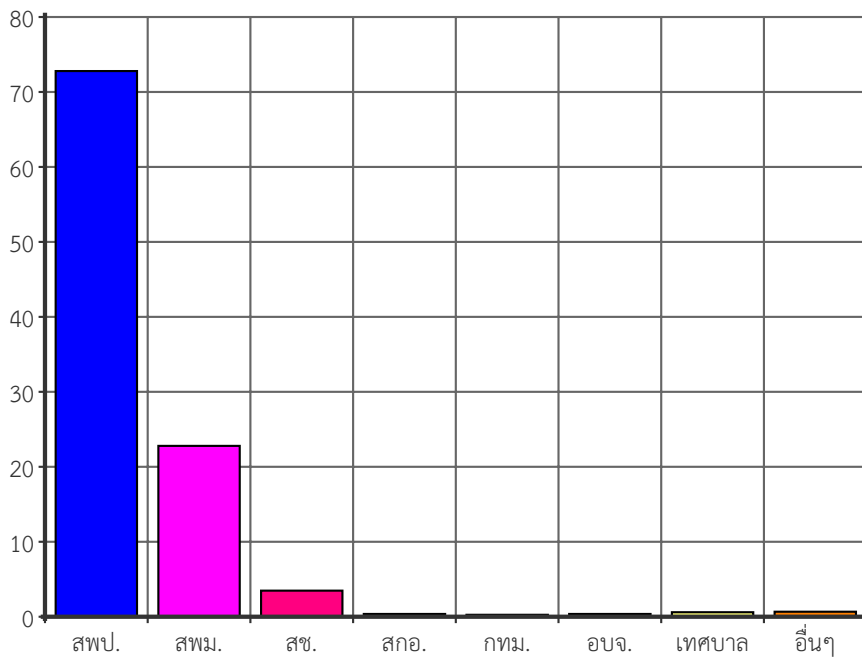
ออกแบบ : 112 คน จาก 2672 คน คิดเป็น : 4.19 %



## สถิติจากแบบประเมินฯของครู

### สถิติสังกัดโรงเรียน

- สพป. : 1945 คน จาก 2672 คน คิดเป็น : 72.79 %
- สพม. : 609 คน จาก 2672 คน คิดเป็น : 22.79 %
- สช. : 93 คน จาก 2672 คน คิดเป็น : 3.48 %
- สกอ. : 10 คน จาก 2672 คน คิดเป็น : 0.37 %
- กรุงเทพมหานคร : 7 คน จาก 2672 คน คิดเป็น : 0.26 %
- อบจ. : 10 คน จาก 2672 คน คิดเป็น : 0.37 %
- เทศบาล : 16 คน จาก 2672 คน คิดเป็น : 0.6 %
- อื่นๆ : 18 คน จาก 2672 คน คิดเป็น : 0.67 %



### สถิติของความพึงพอใจในการใช้หนังสือเรียน

- 1 หนังสือเรียนมีคู่มือหรือคำแนะนำสำหรับครูในการจัดการเรียนรู้ : 2116 คน จาก 2672 คน คิดเป็น : 79.19 %
- 2 หนังสือเรียนมีคำแนะนำสำหรับนักเรียนในการเรียนรู้ด้วยตนเอง : 1457 คน จาก 2672 คน คิดเป็น : 54.53 %
- 3 หนังสือเรียนช่วยสร้างความสนใจในการเรียนรู้ของนักเรียน : 1584 คน จาก 2672 คน คิดเป็น : 59.28 %
- 4 หนังสือเรียนมีเทคนิคและรูปแบบการนำเสนอที่น่าสนใจ : 1460 คน จาก 2672 คน คิดเป็น : 54.64 %
- 5 อื่นๆ : 34 คน จาก 2672 คน คิดเป็น : 1.27 %

# สถิติจากแบบประเมินฯของครู

## สถิติอายุและประสบการณ์ในการสอน

รายการ	Mean	SD	Min	Max
อายุ(ปี)	39.31	10.75	20	65
ประสบการณ์สอน(ปี)	12.98	10.86	0	40

## สถิติแยกตามชั้นปีที่สอน(แสดงจำนวนคน)

ระดับชั้น	วิทยาศาสตร์	คณิตศาสตร์	เทคโนโลยี	ออกแบบ	ฟิสิกส์	เคมี	ชีวะ	ดาราศาสตร์
ป.1	214	132	143	9	0	0	0	0
ป.2	237	141	154	17	0	0	0	0
ป.3	292	172	158	15	0	0	0	0
ป.4	491	275	213	34	0	0	0	0
ป.5	558	342	223	34	0	0	0	0
ป.6	622	411	236	41	0	0	0	0
ม.1	274	199	170	28	0	0	0	0
ม.2	281	193	173	31	0	0	0	0
ม.3	285	206	166	32	0	0	0	0
ม.4	31	65	70	17	62	67	65	45
ม.5	24	53	70	14	63	73	62	26
ม.6	28	65	76	19	58	66	57	20

## วิชาวิทยาศาสตร์

รายชื่อหนังสือ	ได้ใช้	ไม่ได้ใช้	พึงพอใจ	เฉยๆ	ไม่พึงพอใจ
r_s_1_1_1	152:212 = 71.7%	60:212 = 28.3%	137:152 = 90.13%	14:152 = 9.21%	1:152 = 0.66%
r_s_1_2_1	73:212 = 34.43%	139:212 = 65.57%	66:73 = 90.41%	6:73 = 8.22%	1:73 = 1.37%
r_s_1_3_1	127:212 = 59.91%	85:212 = 40.09%	117:127 = 92.13%	8:127 = 6.3%	2:127 = 1.57%
r_s_1_4_1	68:212 = 32.08%	144:212 = 67.92%	66:68 = 97.06%	2:68 = 2.94%	0:68 = 0%
r_s_2_1_1	173:235 = 73.62%	62:235 = 26.38%	158:173 = 91.33%	11:173 = 6.36%	4:173 = 2.31%
r_s_2_2_1	153:235 = 65.11%	82:235 = 34.89%	142:153 = 92.81%	10:153 = 6.54%	1:153 = 0.65%
r_s_3_1_1	214:291 = 73.54%	77:291 = 26.46%	197:214 = 92.06%	15:214 = 7.01%	2:214 = 0.93%
r_s_3_2_1	190:291 = 65.29%	101:291 = 34.71%	178:190 = 93.68%	8:190 = 4.21%	4:190 = 2.11%
r_s_4_1_1	331:484 = 68.39%	153:484 = 31.61%	291:331 = 87.92%	22:331 = 6.65%	18:331 = 5.44%
r_s_4_2_1	148:484 = 30.58%	336:484 = 69.42%	145:148 = 97.97%	3:148 = 2.03%	0:148 = 0%
r_s_4_3_1	252:484 = 52.07%	232:484 = 47.93%	228:252 = 90.48%	17:252 = 6.75%	7:252 = 2.78%
r_s_4_4_1	128:484 = 26.45%	356:484 = 73.55%	125:128 = 97.66%	2:128 = 1.56%	1:128 = 0.78%
r_s_5_1_1	411:552 = 74.46%	141:552 = 25.54%	370:411 = 90.02%	30:411 = 7.3%	11:411 = 2.68%
r_s_5_2_1	328:552 = 59.42%	224:552 = 40.58%	305:328 = 92.99%	18:328 = 5.49%	5:328 = 1.52%
r_s_6_1_1	470:617 = 76.18%	147:617 = 23.82%	438:470 = 93.19%	23:470 = 4.89%	9:470 = 1.91%
r_s_6_2_1	367:617 = 59.48%	250:617 = 40.52%	347:367 = 94.55%	18:367 = 4.9%	2:367 = 0.54%
r_s_7_1_1	192:271 = 70.85%	79:271 = 29.15%	171:192 = 89.06%	16:192 = 8.33%	5:192 = 2.6%
r_s_7_2_1	184:271 = 67.9%	87:271 = 32.1%	163:184 = 88.59%	16:184 = 8.7%	5:184 = 2.72%
r_s_8_1_1	184:279 = 65.95%	95:279 = 34.05%	166:184 = 90.22%	12:184 = 6.52%	6:184 = 3.26%
r_s_8_2_1	186:279 = 66.67%	93:279 = 33.33%	167:186 = 89.78%	12:186 = 6.45%	7:186 = 3.76%

## สถิติจากแบบประเมินฯของครู

r_s_9_1_1	194:281 = 69.04%	87:281 = 30.96%	173:194 = 89.18%	16:194 = 8.25%	5:194 = 2.58%
r_s_9_2_1	189:281 = 67.26%	92:281 = 32.74%	165:189 = 87.3%	17:189 = 8.99%	7:189 = 3.7%
r_s_789_additional_1_1	53:367 = 14.44%	314:367 = 85.56%	50:53 = 94.34%	3:53 = 5.66%	0:53 = 0%
r_s_789_additional_2_1	47:367 = 12.81%	320:367 = 87.19%	45:47 = 95.74%	1:47 = 2.13%	1:47 = 2.13%
r_s_789_additional_3_1	40:367 = 10.9%	327:367 = 89.1%	40:40 = 100%	0:40 = 0%	0:40 = 0%
r_s_789_additional_4_1	60:367 = 16.35%	307:367 = 83.65%	57:60 = 95%	3:60 = 5%	0:60 = 0%
r_s_789_additional_5_1	56:367 = 15.26%	311:367 = 84.74%	53:56 = 94.64%	3:56 = 5.36%	0:56 = 0%
r_s_101112n_1_1	15:41 = 36.59%	26:41 = 63.41%	13:15 = 86.67%	2:15 = 13.33%	0:15 = 0%
r_s_101112n_2_1	18:41 = 43.9%	23:41 = 56.1%	17:18 = 94.44%	1:18 = 5.56%	0:18 = 0%
r_s_101112n_3_1	13:41 = 31.71%	28:41 = 68.29%	12:13 = 92.31%	1:13 = 7.69%	0:13 = 0%
r_s_101112n_4_1	12:41 = 29.27%	29:41 = 70.73%	11:12 = 91.67%	1:12 = 8.33%	0:12 = 0%
r_s_101112n_5_1	15:41 = 36.59%	26:41 = 63.41%	15:15 = 100%	0:15 = 0%	0:15 = 0%
r_s_101112n_6_1	15:41 = 36.59%	26:41 = 63.41%	13:15 = 86.67%	2:15 = 13.33%	0:15 = 0%
r_s_101112p_1_1	54:94 = 57.45%	40:94 = 42.55%	39:54 = 72.22%	12:54 = 22.22%	3:54 = 5.56%
r_s_101112p_2_1	62:94 = 65.96%	32:94 = 34.04%	53:62 = 85.48%	7:62 = 11.29%	2:62 = 3.23%
r_s_101112p_3_1	64:94 = 68.09%	30:94 = 31.91%	53:64 = 82.81%	8:64 = 12.5%	3:64 = 4.69%
r_s_101112p_4_1	60:94 = 63.83%	34:94 = 36.17%	49:60 = 81.67%	10:60 = 16.67%	1:60 = 1.67%
r_s_101112p_5_1	57:94 = 60.64%	37:94 = 39.36%	51:57 = 89.47%	5:57 = 8.77%	1:57 = 1.75%
r_s_101112p_6_1	57:94 = 60.64%	37:94 = 39.36%	47:57 = 82.46%	10:57 = 17.54%	0:57 = 0%
r_s_101112c_1_1	67:100 = 67%	33:100 = 33%	45:67 = 67.16%	17:67 = 25.37%	5:67 = 7.46%
r_s_101112c_2_1	72:100 = 72%	28:100 = 28%	59:72 = 81.94%	12:72 = 16.67%	1:72 = 1.39%
r_s_101112c_3_1	74:100 = 74%	26:100 = 26%	61:74 = 82.43%	11:74 = 14.86%	2:74 = 2.7%
r_s_101112c_4_1	77:100 = 77%	23:100 = 23%	64:77 = 83.12%	11:77 = 14.29%	2:77 = 2.6%
r_s_101112c_5_1	71:100 = 71%	29:100 = 29%	61:71 = 85.92%	8:71 = 11.27%	2:71 = 2.82%
r_s_101112c_6_1	69:100 = 69%	31:100 = 31%	61:69 = 88.41%	6:69 = 8.7%	2:69 = 2.9%
r_s_101112b_1_1	67:99 = 67.68%	32:99 = 32.32%	55:67 = 82.09%	8:67 = 11.94%	4:67 = 5.97%
r_s_101112b_2_1	67:99 = 67.68%	32:99 = 32.32%	57:67 = 85.07%	7:67 = 10.45%	3:67 = 4.48%
r_s_101112b_3_1	60:99 = 60.61%	39:99 = 39.39%	54:60 = 90%	5:60 = 8.33%	1:60 = 1.67%
r_s_101112b_4_1	57:99 = 57.58%	42:99 = 42.42%	52:57 = 91.23%	4:57 = 7.02%	1:57 = 1.75%
r_s_101112b_5_1	62:99 = 62.63%	37:99 = 37.37%	54:62 = 87.1%	6:62 = 9.68%	2:62 = 3.23%
r_s_101112b_6_1	59:99 = 59.6%	40:99 = 40.4%	51:59 = 86.44%	6:59 = 10.17%	2:59 = 3.39%
r_s_101112e_1_1	51:67 = 76.12%	16:67 = 23.88%	47:51 = 92.16%	4:51 = 7.84%	0:51 = 0%
r_s_101112e_2_1	14:67 = 20.9%	53:67 = 79.1%	14:14 = 100%	0:14 = 0%	0:14 = 0%
r_s_101112e_3_1	9:67 = 13.43%	58:67 = 86.57%	8:9 = 88.89%	1:9 = 11.11%	0:9 = 0%
r_s_101112e_4_1	8:67 = 11.94%	59:67 = 88.06%	8:8 = 100%	0:8 = 0%	0:8 = 0%

# สถิติจากแบบประเมินฯของครู

## คู่มือครูวิชาวิทยาศาสตร์

รายชื่อหนังสือ	ได้ใช้	ไม่ได้ใช้	พึงพอใจ	เฉยๆ	ไม่พึงพอใจ
r_s_ins_1_1_1	89:212 = 41.98%	123:212 = 58.02%	87:89 = 97.75%	2:89 = 2.25%	0:89 = 0%
r_s_ins_2_1_1	91:235 = 38.72%	144:235 = 61.28%	88:91 = 96.7%	3:91 = 3.3%	0:91 = 0%
r_s_ins_3_1_1	119:291 = 40.89%	172:291 = 59.11%	116:119 = 97.48%	3:119 = 2.52%	0:119 = 0%
r_s_ins_4_1_1	218:484 = 45.04%	266:484 = 54.96%	210:218 = 96.33%	7:218 = 3.21%	1:218 = 0.46%
r_s_ins_5_1_1	245:552 = 44.38%	307:552 = 55.62%	236:245 = 96.33%	9:245 = 3.67%	0:245 = 0%
r_s_ins_6_1_1	281:617 = 45.54%	336:617 = 54.46%	271:281 = 96.44%	8:281 = 2.85%	2:281 = 0.71%
r_s_ins_7_1_1	86:271 = 31.73%	185:271 = 68.27%	81:86 = 94.19%	3:86 = 3.49%	2:86 = 2.33%
r_s_ins_7_2_1	84:271 = 31%	187:271 = 69%	77:84 = 91.67%	4:84 = 4.76%	3:84 = 3.57%
r_s_ins_8_1_1	121:279 = 43.37%	158:279 = 56.63%	115:121 = 95.04%	4:121 = 3.31%	2:121 = 1.65%
r_s_ins_8_2_1	120:279 = 43.01%	159:279 = 56.99%	114:120 = 95%	5:120 = 4.17%	1:120 = 0.83%
r_s_ins_9_1_1	120:281 = 42.7%	161:281 = 57.3%	116:120 = 96.67%	4:120 = 3.33%	0:120 = 0%
r_s_ins_9_2_1	120:281 = 42.7%	161:281 = 57.3%	117:120 = 97.5%	3:120 = 2.5%	0:120 = 0%
r_s_ins_789_additional_1_1	39:367 = 10.63%	328:367 = 89.37%	37:39 = 94.87%	1:39 = 2.56%	1:39 = 2.56%
r_s_ins_789_additional_2_1	36:367 = 9.81%	331:367 = 90.19%	35:36 = 97.22%	1:36 = 2.78%	0:36 = 0%
r_s_ins_789_additional_3_1	41:367 = 11.17%	326:367 = 88.83%	40:41 = 97.56%	1:41 = 2.44%	0:41 = 0%
r_s_ins_789_additional_4_1	45:367 = 12.26%	322:367 = 87.74%	45:45 = 100%	0:45 = 0%	0:45 = 0%
r_s_ins_789_additional_5_1	41:367 = 11.17%	326:367 = 88.83%	40:41 = 97.56%	1:41 = 2.44%	0:41 = 0%
r_s_ins_101112n_1_1	10:41 = 24.39%	31:41 = 75.61%	10:10 = 100%	0:10 = 0%	0:10 = 0%
r_s_ins_101112n_2_1	12:41 = 29.27%	29:41 = 70.73%	12:12 = 100%	0:12 = 0%	0:12 = 0%
r_s_ins_101112n_3_1	10:41 = 24.39%	31:41 = 75.61%	10:10 = 100%	0:10 = 0%	0:10 = 0%
r_s_ins_101112n_4_1	10:41 = 24.39%	31:41 = 75.61%	10:10 = 100%	0:10 = 0%	0:10 = 0%
r_s_ins_101112n_5_1	11:41 = 26.83%	30:41 = 73.17%	11:11 = 100%	0:11 = 0%	0:11 = 0%
r_s_ins_101112n_6_1	10:41 = 24.39%	31:41 = 75.61%	10:10 = 100%	0:10 = 0%	0:10 = 0%
r_s_ins_101112p_1_1	37:94 = 39.36%	57:94 = 60.64%	33:37 = 89.19%	2:37 = 5.41%	2:37 = 5.41%
r_s_ins_101112p_2_1	39:94 = 41.49%	55:94 = 58.51%	36:39 = 92.31%	1:39 = 2.56%	2:39 = 5.13%
r_s_ins_101112p_3_1	38:94 = 40.43%	56:94 = 59.57%	35:38 = 92.11%	2:38 = 5.26%	1:38 = 2.63%
r_s_ins_101112p_4_1	36:94 = 38.3%	58:94 = 61.7%	32:36 = 88.89%	3:36 = 8.33%	1:36 = 2.78%
r_s_ins_101112p_5_1	32:94 = 34.04%	62:94 = 65.96%	30:32 = 93.75%	2:32 = 6.25%	0:32 = 0%
r_s_ins_101112p_6_1	32:94 = 34.04%	62:94 = 65.96%	30:32 = 93.75%	2:32 = 6.25%	0:32 = 0%
r_s_ins_101112c_1_1	44:100 = 44%	56:100 = 56%	39:44 = 88.64%	3:44 = 6.82%	2:44 = 4.55%
r_s_ins_101112c_2_1	44:100 = 44%	56:100 = 56%	37:44 = 84.09%	6:44 = 13.64%	1:44 = 2.27%
r_s_ins_101112c_3_1	54:100 = 54%	46:100 = 46%	46:54 = 85.19%	6:54 = 11.11%	2:54 = 3.7%
r_s_ins_101112c_4_1	45:100 = 45%	55:100 = 55%	40:45 = 88.89%	3:45 = 6.67%	2:45 = 4.44%
r_s_ins_101112c_5_1	46:100 = 46%	54:100 = 54%	40:46 = 86.96%	4:46 = 8.7%	2:46 = 4.35%
r_s_ins_101112c_6_1	41:100 = 41%	59:100 = 59%	35:41 = 85.37%	5:41 = 12.2%	1:41 = 2.44%
r_s_ins_101112b_1_1	51:99 = 51.52%	48:99 = 48.48%	47:51 = 92.16%	3:51 = 5.88%	1:51 = 1.96%
r_s_ins_101112b_2_1	49:99 = 49.49%	50:99 = 50.51%	48:49 = 97.96%	1:49 = 2.04%	0:49 = 0%
r_s_ins_101112b_3_1	44:99 = 44.44%	55:99 = 55.56%	41:44 = 93.18%	3:44 = 6.82%	0:44 = 0%
r_s_ins_101112b_4_1	46:99 = 46.46%	53:99 = 53.54%	43:46 = 93.48%	2:46 = 4.35%	1:46 = 2.17%
r_s_ins_101112b_5_1	42:99 = 42.42%	57:99 = 57.58%	40:42 = 95.24%	2:42 = 4.76%	0:42 = 0%
r_s_ins_101112b_6_1	41:99 = 41.41%	58:99 = 58.59%	36:41 = 87.8%	4:41 = 9.76%	1:41 = 2.44%
r_s_ins_101112e_1_1	12:67 = 17.91%	55:67 = 82.09%	12:12 = 100%	0:12 = 0%	0:12 = 0%

## สถิติจากแบบประเมินฯของครู

r_s_ins_101112e_2_1	6:67 = 8.96%	61:67 = 91.04%	6:6 = 100%	0:6 = 0%	0:6 = 0%
r_s_ins_101112e_3_1	6:67 = 8.96%	61:67 = 91.04%	6:6 = 100%	0:6 = 0%	0:6 = 0%
r_s_ins_101112e_4_1	15:67 = 22.39%	52:67 = 77.61%	15:15 = 100%	0:15 = 0%	0:15 = 0%

### วิชาคณิตศาสตร์

รายชื่อหนังสือ	ได้ใช้	ไม่ได้ใช้	พึงพอใจ	เฉยๆ	ไม่พึงพอใจ
r_m_1_1_1	123:133 = 92.48%	10:133 = 7.52%	120:123 = 97.56%	1:123 = 0.81%	2:123 = 1.63%
r_m_1_2_1	90:133 = 67.67%	43:133 = 32.33%	89:90 = 98.89%	0:90 = 0%	1:90 = 1.11%
r_m_1_3_1	118:133 = 88.72%	15:133 = 11.28%	117:118 = 99.15%	0:118 = 0%	1:118 = 0.85%
r_m_1_4_1	116:133 = 87.22%	17:133 = 12.78%	115:116 = 99.14%	0:116 = 0%	1:116 = 0.86%
r_m_2_1_1	132:139 = 94.96%	7:139 = 5.04%	124:132 = 93.94%	6:132 = 4.55%	2:132 = 1.52%
r_m_2_2_1	127:139 = 91.37%	12:139 = 8.63%	118:127 = 92.91%	7:127 = 5.51%	2:127 = 1.57%
r_m_2_3_1	126:139 = 90.65%	13:139 = 9.35%	118:126 = 93.65%	6:126 = 4.76%	2:126 = 1.59%
r_m_3_1_1	163:173 = 94.22%	10:173 = 5.78%	156:163 = 95.71%	5:163 = 3.07%	2:163 = 1.23%
r_m_3_2_1	153:173 = 88.44%	20:173 = 11.56%	149:153 = 97.39%	3:153 = 1.96%	1:153 = 0.65%
r_m_3_3_1	152:173 = 87.86%	21:173 = 12.14%	148:152 = 97.37%	3:152 = 1.97%	1:152 = 0.66%
r_m_4_1_1	257:277 = 92.78%	20:277 = 7.22%	247:257 = 96.11%	6:257 = 2.33%	4:257 = 1.56%
r_m_4_2_1	241:277 = 87%	36:277 = 13%	229:241 = 95.02%	8:241 = 3.32%	4:241 = 1.66%
r_m_4_3_1	241:277 = 87%	36:277 = 13%	229:241 = 95.02%	8:241 = 3.32%	4:241 = 1.66%
r_m_5_1_1	320:342 = 93.57%	22:342 = 6.43%	311:320 = 97.19%	7:320 = 2.19%	2:320 = 0.63%
r_m_5_2_1	290:342 = 84.8%	52:342 = 15.2%	279:290 = 96.21%	9:290 = 3.1%	2:290 = 0.69%
r_m_5_3_1	287:342 = 83.92%	55:342 = 16.08%	278:287 = 96.86%	7:287 = 2.44%	2:287 = 0.7%
r_m_6_1_1	376:409 = 91.93%	33:409 = 8.07%	365:376 = 97.07%	9:376 = 2.39%	2:376 = 0.53%
r_m_6_2_1	337:409 = 82.4%	72:409 = 17.6%	322:337 = 95.55%	11:337 = 3.26%	4:337 = 1.19%
r_m_6_3_1	331:409 = 80.93%	78:409 = 19.07%	317:331 = 95.77%	10:331 = 3.02%	4:331 = 1.21%
r_m_7_1_1	166:196 = 84.69%	30:196 = 15.31%	141:166 = 84.94%	22:166 = 13.25%	3:166 = 1.81%
r_m_7_2_1	164:196 = 83.67%	32:196 = 16.33%	144:164 = 87.8%	19:164 = 11.59%	1:164 = 0.61%
r_m_7_3_1	100:196 = 51.02%	96:196 = 48.98%	87:100 = 87%	12:100 = 12%	1:100 = 1%
r_m_7_4_1	100:196 = 51.02%	96:196 = 48.98%	88:100 = 88%	11:100 = 11%	1:100 = 1%
r_m_8_1_1	163:190 = 85.79%	27:190 = 14.21%	141:163 = 86.5%	20:163 = 12.27%	2:163 = 1.23%
r_m_8_2_1	164:190 = 86.32%	26:190 = 13.68%	143:164 = 87.2%	19:164 = 11.59%	2:164 = 1.22%
r_m_8_3_1	94:190 = 49.47%	96:190 = 50.53%	80:94 = 85.11%	12:94 = 12.77%	2:94 = 2.13%
r_m_8_4_1	93:190 = 48.95%	97:190 = 51.05%	80:93 = 86.02%	11:93 = 11.83%	2:93 = 2.15%
r_m_9_1_1	171:204 = 83.82%	33:204 = 16.18%	150:171 = 87.72%	19:171 = 11.11%	2:171 = 1.17%
r_m_9_2_1	170:204 = 83.33%	34:204 = 16.67%	148:170 = 87.06%	20:170 = 11.76%	2:170 = 1.18%
r_m_9_3_1	100:204 = 49.02%	104:204 = 50.98%	85:100 = 85%	15:100 = 15%	0:100 = 0%
r_m_9_4_1	96:204 = 47.06%	108:204 = 52.94%	82:96 = 85.42%	13:96 = 13.54%	1:96 = 1.04%
r_m_101112_1_1	58:110 = 52.73%	52:110 = 47.27%	46:58 = 79.31%	10:58 = 17.24%	2:58 = 3.45%
r_m_101112_2_1	65:110 = 59.09%	45:110 = 40.91%	48:65 = 73.85%	12:65 = 18.46%	5:65 = 7.69%
r_m_101112_3_1	57:110 = 51.82%	53:110 = 48.18%	47:57 = 82.46%	9:57 = 15.79%	1:57 = 1.75%
r_m_101112_4_1	49:110 = 44.55%	61:110 = 55.45%	39:49 = 79.59%	9:49 = 18.37%	1:49 = 2.04%
r_m_101112_5_1	52:110 = 47.27%	58:110 = 52.73%	39:52 = 75%	11:52 = 21.15%	2:52 = 3.85%

## สถิติจากแบบประเมินฯของครู

r_m_101112_6_1	47:110 = 42.73%	63:110 = 57.27%	35:47 = 74.47%	9:47 = 19.15%	3:47 = 6.38%
r_m_101112_7_1	46:110 = 41.82%	64:110 = 58.18%	35:46 = 76.09%	10:46 = 21.74%	1:46 = 2.17%
r_m_101112_8_1	42:110 = 38.18%	68:110 = 61.82%	33:42 = 78.57%	8:42 = 19.05%	1:42 = 2.38%
r_m_101112_9_1	37:110 = 33.64%	73:110 = 66.36%	30:37 = 81.08%	7:37 = 18.92%	0:37 = 0%

### คู่มือครูวิชาคณิตศาสตร์

รายชื่อหนังสือ	ได้ใช้	ไม่ได้ใช้	พึงพอใจ	เฉยๆ	ไม่พึงพอใจ
r_m_ins_1_1_1	60:133 = 45.11%	73:133 = 54.89%	59:60 = 98.33%	1:60 = 1.67%	0:60 = 0%
r_m_ins_1_2_1	76:133 = 57.14%	57:133 = 42.86%	75:76 = 98.68%	1:76 = 1.32%	0:76 = 0%
r_m_ins_2_1_1	75:139 = 53.96%	64:139 = 46.04%	72:75 = 96%	2:75 = 2.67%	1:75 = 1.33%
r_m_ins_3_1_1	93:173 = 53.76%	80:173 = 46.24%	89:93 = 95.7%	3:93 = 3.23%	1:93 = 1.08%
r_m_ins_4_1_1	169:277 = 61.01%	108:277 = 38.99%	161:169 = 95.27%	7:169 = 4.14%	1:169 = 0.59%
r_m_ins_5_1_1	207:342 = 60.53%	135:342 = 39.47%	201:207 = 97.1%	4:207 = 1.93%	2:207 = 0.97%
r_m_ins_6_1_1	237:409 = 57.95%	172:409 = 42.05%	229:237 = 96.62%	5:237 = 2.11%	3:237 = 1.27%
r_m_ins_7_1_1	97:196 = 49.49%	99:196 = 50.51%	88:97 = 90.72%	9:97 = 9.28%	0:97 = 0%
r_m_ins_7_2_1	94:196 = 47.96%	102:196 = 52.04%	85:94 = 90.43%	9:94 = 9.57%	0:94 = 0%
r_m_ins_7_3_1	88:196 = 44.9%	108:196 = 55.1%	80:88 = 90.91%	7:88 = 7.95%	1:88 = 1.14%
r_m_ins_7_4_1	82:196 = 41.84%	114:196 = 58.16%	73:82 = 89.02%	9:82 = 10.98%	0:82 = 0%
r_m_ins_8_1_1	84:190 = 44.21%	106:190 = 55.79%	78:84 = 92.86%	6:84 = 7.14%	0:84 = 0%
r_m_ins_8_2_1	84:190 = 44.21%	106:190 = 55.79%	78:84 = 92.86%	5:84 = 5.95%	1:84 = 1.19%
r_m_ins_8_3_1	73:190 = 38.42%	117:190 = 61.58%	65:73 = 89.04%	8:73 = 10.96%	0:73 = 0%
r_m_ins_8_4_1	72:190 = 37.89%	118:190 = 62.11%	67:72 = 93.06%	5:72 = 6.94%	0:72 = 0%
r_m_ins_9_1_1	83:204 = 40.69%	121:204 = 59.31%	74:83 = 89.16%	9:83 = 10.84%	0:83 = 0%
r_m_ins_9_2_1	79:204 = 38.73%	125:204 = 61.27%	72:79 = 91.14%	7:79 = 8.86%	0:79 = 0%
r_m_ins_9_3_1	80:204 = 39.22%	124:204 = 60.78%	73:80 = 91.25%	7:80 = 8.75%	0:80 = 0%
r_m_ins_9_4_1	80:204 = 39.22%	124:204 = 60.78%	74:80 = 92.5%	6:80 = 7.5%	0:80 = 0%
r_m_ins_101112_1_1	33:110 = 30%	77:110 = 70%	27:33 = 81.82%	6:33 = 18.18%	0:33 = 0%
r_m_ins_101112_2_1	32:110 = 29.09%	78:110 = 70.91%	26:32 = 81.25%	6:32 = 18.75%	0:32 = 0%
r_m_ins_101112_3_1	30:110 = 27.27%	80:110 = 72.73%	26:30 = 86.67%	3:30 = 10%	1:30 = 3.33%
r_m_ins_101112_4_1	23:110 = 20.91%	87:110 = 79.09%	19:23 = 82.61%	4:23 = 17.39%	0:23 = 0%
r_m_ins_101112_5_1	23:110 = 20.91%	87:110 = 79.09%	21:23 = 91.3%	2:23 = 8.7%	0:23 = 0%
r_m_ins_101112_6_1	22:110 = 20%	88:110 = 80%	20:22 = 90.91%	2:22 = 9.09%	0:22 = 0%
r_m_ins_101112_7_1	27:110 = 24.55%	83:110 = 75.45%	25:27 = 92.59%	2:27 = 7.41%	0:27 = 0%
r_m_ins_101112_8_1	23:110 = 20.91%	87:110 = 79.09%	18:23 = 78.26%	5:23 = 21.74%	0:23 = 0%
r_m_ins_101112_9_1	22:110 = 20%	88:110 = 80%	20:22 = 90.91%	2:22 = 9.09%	0:22 = 0%

### วิชาเทคโนโลยี

รายชื่อหนังสือ	ได้ใช้	ไม่ได้ใช้	พึงพอใจ	เฉยๆ	ไม่พึงพอใจ
r_t_1_1_1	42:142 = 29.58%	100:142 = 70.42%	40:42 = 95.24%	2:42 = 4.76%	0:42 = 0%
r_t_1_2_1	33:142 = 23.24%	109:142 = 76.76%	32:33 = 96.97%	1:33 = 3.03%	0:33 = 0%

## สถิติจากแบบประเมินฯของครู

r_t_2_1_1	40:152 = 26.32%	112:152 = 73.68%	38:40 = 95%	2:40 = 5%	0:40 = 0%
r_t_2_2_1	32:152 = 21.05%	120:152 = 78.95%	31:32 = 96.88%	1:32 = 3.13%	0:32 = 0%
r_t_3_1_1	43:158 = 27.22%	115:158 = 72.78%	42:43 = 97.67%	1:43 = 2.33%	0:43 = 0%
r_t_3_2_1	31:158 = 19.62%	127:158 = 80.38%	30:31 = 96.77%	1:31 = 3.23%	0:31 = 0%
r_t_4_1_1	63:210 = 30%	147:210 = 70%	62:63 = 98.41%	1:63 = 1.59%	0:63 = 0%
r_t_4_2_1	50:210 = 23.81%	160:210 = 76.19%	49:50 = 98%	1:50 = 2%	0:50 = 0%
r_t_5_1_1	62:221 = 28.05%	159:221 = 71.95%	58:62 = 93.55%	4:62 = 6.45%	0:62 = 0%
r_t_5_2_1	50:221 = 22.62%	171:221 = 77.38%	46:50 = 92%	4:50 = 8%	0:50 = 0%
r_t_6_1_1	69:232 = 29.74%	163:232 = 70.26%	68:69 = 98.55%	1:69 = 1.45%	0:69 = 0%
r_t_6_2_1	55:232 = 23.71%	177:232 = 76.29%	54:55 = 98.18%	1:55 = 1.82%	0:55 = 0%
r_t_7_1_1	45:169 = 26.63%	124:169 = 73.37%	39:45 = 86.67%	6:45 = 13.33%	0:45 = 0%
r_t_8_1_1	53:170 = 31.18%	117:170 = 68.82%	48:53 = 90.57%	5:53 = 9.43%	0:53 = 0%
r_t_9_1_1	43:164 = 26.22%	121:164 = 73.78%	39:43 = 90.7%	4:43 = 9.3%	0:43 = 0%
r_t_789_additional_1_1	28:204 = 13.73%	176:204 = 86.27%	25:28 = 89.29%	2:28 = 7.14%	1:28 = 3.57%
r_t_789_additional_2_1	20:204 = 9.8%	184:204 = 90.2%	17:20 = 85%	1:20 = 5%	2:20 = 10%
r_t_789_additional_3_1	24:204 = 11.76%	180:204 = 88.24%	20:24 = 83.33%	2:24 = 8.33%	2:24 = 8.33%
r_t_101112_1_1	57:107 = 53.27%	50:107 = 46.73%	50:57 = 87.72%	4:57 = 7.02%	3:57 = 5.26%
r_t_101112_2_1	13:107 = 12.15%	94:107 = 87.85%	11:13 = 84.62%	1:13 = 7.69%	1:13 = 7.69%
r_t_101112_3_1	8:107 = 7.48%	99:107 = 92.52%	5:8 = 62.5%	3:8 = 37.5%	0:8 = 0%
r_t_101112_4_1	27:107 = 25.23%	80:107 = 74.77%	22:27 = 81.48%	5:27 = 18.52%	0:27 = 0%
r_t_101112_5_1	2:107 = 1.87%	105:107 = 98.13%	2:2 = 100%	0:2 = 0%	0:2 = 0%

## คู่มือครูวิชาเทคโนโลยี

รายชื่อหนังสือ	ได้ใช้	ไม่ได้ใช้	พึงพอใจ	เฉยๆ	ไม่พึงพอใจ
r_t_ins_1_1_1	34:142 = 23.94%	108:142 = 76.06%	33:34 = 97.06%	1:34 = 2.94%	0:34 = 0%
r_t_ins_2_1_1	34:152 = 22.37%	118:152 = 77.63%	32:34 = 94.12%	2:34 = 5.88%	0:34 = 0%
r_t_ins_3_1_1	30:157 = 19.11%	127:157 = 80.89%	29:30 = 96.67%	1:30 = 3.33%	0:30 = 0%
r_t_ins_4_1_1	49:210 = 23.33%	161:210 = 76.67%	48:49 = 97.96%	1:49 = 2.04%	0:49 = 0%
r_t_ins_5_1_1	44:221 = 19.91%	177:221 = 80.09%	43:44 = 97.73%	1:44 = 2.27%	0:44 = 0%
r_t_ins_6_1_1	53:232 = 22.84%	179:232 = 77.16%	52:53 = 98.11%	1:53 = 1.89%	0:53 = 0%
r_t_ins_7_1_1	33:169 = 19.53%	136:169 = 80.47%	31:33 = 93.94%	2:33 = 6.06%	0:33 = 0%
r_t_ins_8_1_1	28:170 = 16.47%	142:170 = 83.53%	24:28 = 85.71%	4:28 = 14.29%	0:28 = 0%
r_t_ins_9_1_1	28:164 = 17.07%	136:164 = 82.93%	24:28 = 85.71%	4:28 = 14.29%	0:28 = 0%
r_t_ins_789_additional_1_1	22:204 = 10.78%	182:204 = 89.22%	20:22 = 90.91%	1:22 = 4.55%	1:22 = 4.55%
r_t_ins_789_additional_2_1	15:204 = 7.35%	189:204 = 92.65%	13:15 = 86.67%	1:15 = 6.67%	1:15 = 6.67%
r_t_ins_789_additional_3_1	20:204 = 9.8%	184:204 = 90.2%	18:20 = 90%	2:20 = 10%	0:20 = 0%
r_t_ins_101112_1_1	29:107 = 27.1%	78:107 = 72.9%	26:29 = 89.66%	3:29 = 10.34%	0:29 = 0%
r_t_ins_101112_2_1	6:107 = 5.61%	101:107 = 94.39%	5:6 = 83.33%	1:6 = 16.67%	0:6 = 0%
r_t_ins_101112_3_1	4:107 = 3.74%	103:107 = 96.26%	3:4 = 75%	1:4 = 25%	0:4 = 0%
r_t_ins_101112_4_1	11:107 = 10.28%	96:107 = 89.72%	10:11 = 90.91%	1:11 = 9.09%	0:11 = 0%
r_t_ins_101112_5_1	2:107 = 1.87%	105:107 = 98.13%	2:2 = 100%	0:2 = 0%	0:2 = 0%



# สถิติจากแบบประเมินฯของครู

## วิชาออกแบบ

รายชื่อหนังสือ	ได้ใช้	ไม่ได้ใช้	พึงพอใจ	เฉยๆ	ไม่พึงพอใจ
r_d_2_1_1	2:17 = 11.76%	15:17 = 88.24%	2:2 = 100%	0:2 = 0%	0:2 = 0%
r_d_3_1_1	0:14 = 0%	14:14 = 100%	0:0 = 0%	0:0 = 0%	0:0 = 0%
r_d_5_1_1	6:32 = 18.75%	26:32 = 81.25%	6:6 = 100%	0:6 = 0%	0:6 = 0%
r_d_6_1_1	6:39 = 15.38%	33:39 = 84.62%	6:6 = 100%	0:6 = 0%	0:6 = 0%
r_d_8_1_1	5:30 = 16.67%	25:30 = 83.33%	5:5 = 100%	0:5 = 0%	0:5 = 0%
r_d_9_1_1	6:31 = 19.35%	25:31 = 80.65%	6:6 = 100%	0:6 = 0%	0:6 = 0%
r_d_89_1_1	2:36 = 5.56%	34:36 = 94.44%	2:2 = 100%	0:2 = 0%	0:2 = 0%
r_d_101112_1_1	12:26 = 46.15%	14:26 = 53.85%	12:12 = 100%	0:12 = 0%	0:12 = 0%
r_d_101112_2_1	1:26 = 3.85%	25:26 = 96.15%	1:1 = 100%	0:1 = 0%	0:1 = 0%
r_d_all_1_1	15:101 = 14.85%	86:101 = 85.15%	15:15 = 100%	0:15 = 0%	0:15 = 0%

## คู่มือครูวิชาออกแบบ

รายชื่อหนังสือ	ได้ใช้	ไม่ได้ใช้	พึงพอใจ	เฉยๆ	ไม่พึงพอใจ
r_d_ins_2_1_1	2:16 = 12.5%	14:16 = 87.5%	2:2 = 100%	0:2 = 0%	0:2 = 0%
r_d_ins_3_1_1	0:14 = 0%	14:14 = 100%	0:0 = 0%	0:0 = 0%	0:0 = 0%
r_d_ins_5_1_1	3:32 = 9.38%	29:32 = 90.63%	3:3 = 100%	0:3 = 0%	0:3 = 0%
r_d_ins_6_1_1	4:39 = 10.26%	35:39 = 89.74%	4:4 = 100%	0:4 = 0%	0:4 = 0%
r_d_ins_8_1_1	3:30 = 10%	27:30 = 90%	2:3 = 66.67%	1:3 = 33.33%	0:3 = 0%
r_d_ins_9_1_1	3:31 = 9.68%	28:31 = 90.32%	3:3 = 100%	0:3 = 0%	0:3 = 0%
r_d_ins_101112_1_1	6:26 = 23.08%	20:26 = 76.92%	6:6 = 100%	0:6 = 0%	0:6 = 0%